



# Installation Instructions

2014 Chevy and GMC 1500 Rear Bumper  
Product Number: T3150/U3150  
Application: 2014+ Chevy and GMC 1500 Trucks

## SAFETY

### Your safety and the safety of others is very important.

- In order to help you make informed decisions about safety, we have provided installation instructions and other information.
- These instructions alert you to potential hazards that could hurt you or others.
- Please do a job safety analysis (JSA) before each task to identify potential hazards for your situation and remove/protect against them.
- You must use your own good judgment, and take your time.

**Read and understand all safety precautions and instructions before installing this product.**

THIS PRODUCT IS FOR OFFROAD USE ONLY. ALL LIABILITY FOR INSTALLATION AND USE RESTS WITH THE OWNER.

**CARELESS INSTALLATION AND OPERATION CAN RESULT IN SERIOUS INJURY OR EQUIPMENT DAMAGE.**

## Injury hazard

### Failure to observe these instructions could lead to severe injury or death.

- Always** remove jewelry and wear eye protection.
- Always** use extreme caution when jacking up a vehicle for work. Set emergency brake and use tire blocks. Locate and use the vehicle manufacturers designated lifting points. Use jack stands.
- Always** use appropriate and adequate care in lifting components into place.
- Always** insure components will remain secure during installation and operation.
- Always** wear safety glasses when installing this kit. A drilling operation will cause flying metal chips. Flying chips can cause serious eye injury.
- Always** use extreme caution when drilling on a vehicle. Thoroughly inspect the area to be drilled (on both sides of material) prior to drilling, and relocate any objects that may be damaged.
- Always** use extreme caution when cutting and trimming during fitting.
- Always** tighten all nuts and bolts securely per installation instructions.
- Always** route electrical cables carefully. Avoid moving parts, components that become hot and rough or sharp edges.
- Always** insulate and protect all exposed wiring and electrical terminals.
- Always** perform regular inspections and maintenance on mounts and related hardware.





## Installation Instructions

2014 Chevy and GMC 1500 Rear Bumper

Product Number: T3150/U3150

Application: 2014+ Chevy and GMC 1500 Trucks

### I. Parts List

- T3150/U3150 rear replacement bumper
- T3150-HW fastener kit
- Tag Light
- 2 License plate mounting inserts
- 2 Reverse lights, mounting grommets, and wire pigtails(Not supplied on the U3150)
- 4 Backup sensor grommets and plugs
- Instruction Manual

### II. Tools Required

- Socket Wrench with Extension
- 3/8" 3/4", 15mm, 18mm, & 22mm Sockets
- 3/4", 15mm, 18mm, & 22mm Box End Wrench
- 5/32" Allen Key



T&U3150\_Manual\_RevA



## Installation Instructions

2014 Chevy and GMC 1500 Rear Bumper

Product Number: T3150/U3150

Application: 2014+ Chevy and GMC 1500 Trucks

### III. Removal of Stock Bumper

1. Remove license plate, and OEM license plate lights. Disconnect trailer receptacle. If equipped, unplug back-up sensor harness.
2. Remove the two fasteners connecting the hitch to the stock bumper located on either side of the receiver with an 18mm socket. Using a 22mm socket disconnect the fasteners connecting the hitch receiver to the frame. Save hardware for reuse.



3. Remove the fasteners connecting the bumper mounts to the frame. This requires removing one bolt from the bottom of the frame (#22 socket/wrench) and three bolts from the side of the frame (#22 and #15 socket/wrench). Save hardware for reuse.



Figure 2





# Installation Instructions

2014 Chevy and GMC 1500 Rear Bumper  
Product Number: T3150/U3150  
Application: 2014+ Chevy and GMC 1500 Trucks



Figure 3

4. Remove OEM bumper by pulling it rearward away from the truck.
5. Remove OEM Spare Tire Access Cover and Trailer Plug from the OEM bumper. Set aside for reinstallation.
6. Re-install Hitch Receiver



Figure 4

## IV. Installation

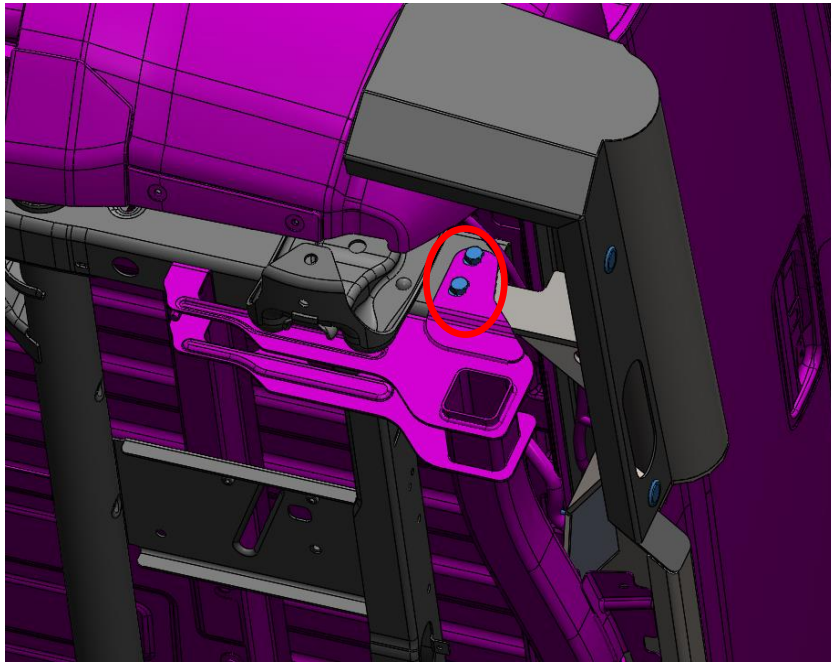
1. Replace OEM bumper with the Black Steel rear bumper assembly. Use the  $\frac{1}{2}$ "x1.5" long Fasteners to fasten the bumper to the frame rail in the OEM mounting locations. Do not fully tighten





# Installation Instructions

2014 Chevy and GMC 1500 Rear Bumper  
Product Number: T3150/U3150  
Application: 2014+ Chevy and GMC 1500 Trucks



2. Level and align the bumper in relation to the truck bed. Fully tighten all fasteners.
3. Re-Insert M10 blot and fasten down with provided hex head nut, Refer to image below



4. Slowly lower the tailgate to ensure there will be no interference. If required, loosen the frame bolts / hitch bolts and adjust alignment of the bumper.
5. Install tag light into the 1 1/4" hole provided in the center section. The powder coating may need to be removed from the hole for proper grounding. Connect wire into the hot wire of OEM tag light circuit. Verify operation.



T&U3150\_Manual\_RevA



## Installation Instructions

2014 Chevy and GMC 1500 Rear Bumper

Product Number: T3150/U3150

Application: 2014+ Chevy and GMC 1500 Trucks

6. Install trailer plug receptacle
7. Reinstall license plate with provided plastic inserts
8. Install grommets into sensor holes. If equipped, insert sensors from the back side. If not equipped, install provided plugs into the grommets.
9. Insert light grommets into oval cut-outs and press lights in from the front. Wire as desired.
10. Secure all loose wiring and harnesses to the frame or bumper with zip ties.

### V. Maintenance/Care

- Periodically check and tighten all fasteners.
- Stripped, fractured, or bent bolts or nuts need to be replaced.



T&U3150\_Manual\_RevA