

OE PLUS STEPS

2019 + RAM 1500

SRDR1-01



TOOLS REQUIRED

- 13mm Socket
- Safety Glasses

SKILL LEVEL

- Novice/Intermediate
- 1 (you) to 2 persons

Little skill level required, you can easily install it by yourself however, additional help will be useful

TIME REQUIRED

- 1.5 Hours

Time to install this should only take about an hour and a half.

WARNINGS/CAUTIONS BEFORE STARTING INSTALLATION

Before you install this kit – Read and understand all instructions, warnings, cautions, and notes contained in this installation instruction guide. Consult your vehicle owner’s manual for proper disconnection of electrical and lifting of vehicle if required for installation of this product.

This install may require some technical skills and knowledge of basic mechanical work. If you do not feel that you are capable of performing this install please take this product to a trained professional.

After reading this guide please contact us with any questions or concerns before installing product.
Customer Service: 855-680-9595

DV8 **Offroad** is not responsible for any bodily injury or harm to you or your vehicle as a result of an improper install.

Proper installation of this kit required knowledge of the factory recommended procedures for removal and installation of original equipment components. We recommend that the factory shop manual and any special tools needed to service your vehicle be on hand during the installation. Installation of this kit without proper knowledge of the factory recommended procedures may affect the performance of these components and the safety of the vehicle

- Always wear eye protection when operating power tools

Inspect all contents of this package to make sure product is not damaged and all installation hardware has been included. If parts are missing from kit, please be prepared to provide the following information

1. Name of purchase location
2. Bar Code on side of box
3. Date above bar code
4. Date inside box cover

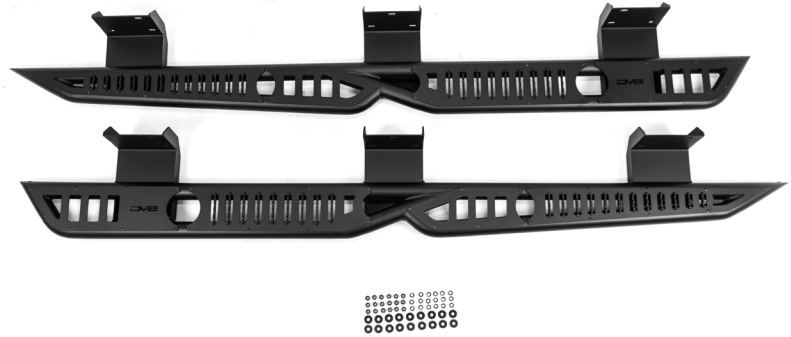


INSTALLATION MANUAL

Begin by unpacking all items and inspecting for missing pieces or damage. If you have any concerns, please contact the company the product was purchased from. Extra hardware may be included with the product.

HARDWARE INCLUDED

- (18) M8 Hex Nuts
- (18) M8 Split Washers
- (18) M8 Flat Washers



STEP 1 | *(Driver side install shown)*
With assistance, lift the DVB OE Plus Steps up to the vehicle and placing the step mounts onto the factory studs.



INSTALLATION MANUAL

STEP 2 | Use the provided M8 hardware to loosely secure the steps in place.

Use (1) Flat washer and (1) split washer per threaded stud.

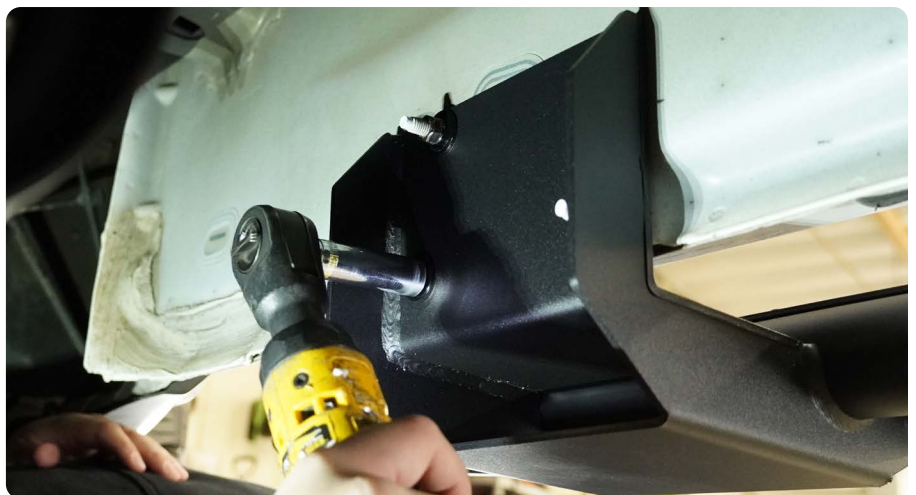


STEP 3 | Center the steps with the vehicle.



STEP 4 | Use a 13mm socket to secure all M8 hardware.

Repeat steps 1-4 on the passenger side.



INSTALLATION MANUAL

STEP 5 | Double check that all hardware is secure.

Congratulations, installation of the DV8 OE Plus Steps is not complete.

