

# LoadLifter 5000™ SERIES



## Installation Guide



**Watch the video**

Info on Table of Contents page

*Chevrolet 1500 Silverado 4WD & GMC 1500 Sierra 4WD*

# Kits 57272 | 88272

For maximum effectiveness and safety, please read these instructions completely before proceeding with installation.

Failure to read these instructions can result in an incorrect installation.

# **Protect your Air Lift Purchase by Completing your Warranty Registration**



Thank you for purchasing an Air Lift load support product!

Take a photo of your sales receipt and then scan the QR code to complete your online warranty registration.

## TABLE OF CONTENTS

<b>Installation Diagram</b> . . . . .	<b>2</b>
<b>Hardware and Tools Lists</b> . . . . .	<b>3</b>
<b>Introduction</b> . . . . .	<b>4</b>
Notation Explanation . . . . .	4
Identifying the Differences Between Kits . . . . .	4
<b>Installing the System</b> . . . . .	<b>5</b>
Preparing the Vehicle . . . . .	5
Assembling the Air Spring Assemblies . . . . .	6
Finished Assemblies . . . . .	8
Installing the Assemblies . . . . .	8
Lower Bracket Attaching Installation . . . . .	9
<b>Installing the Air Lines</b> . . . . .	<b>10</b>
Installing Nylon Air Lines . . . . .	10
Installing the Heat Shield . . . . .	11
<b>Finished Installation</b> . . . . .	<b>12</b>
Installation Checklist . . . . .	13
Maintenance and Use Guidelines . . . . .	13
Limited Warranty and Return Policy . . . . .	13

## Video-enhanced installation guides

Visit [airliftcompany.com/workshop/category/install-videos](http://airliftcompany.com/workshop/category/install-videos) to access our installation video archive\*.

# Installation Diagram

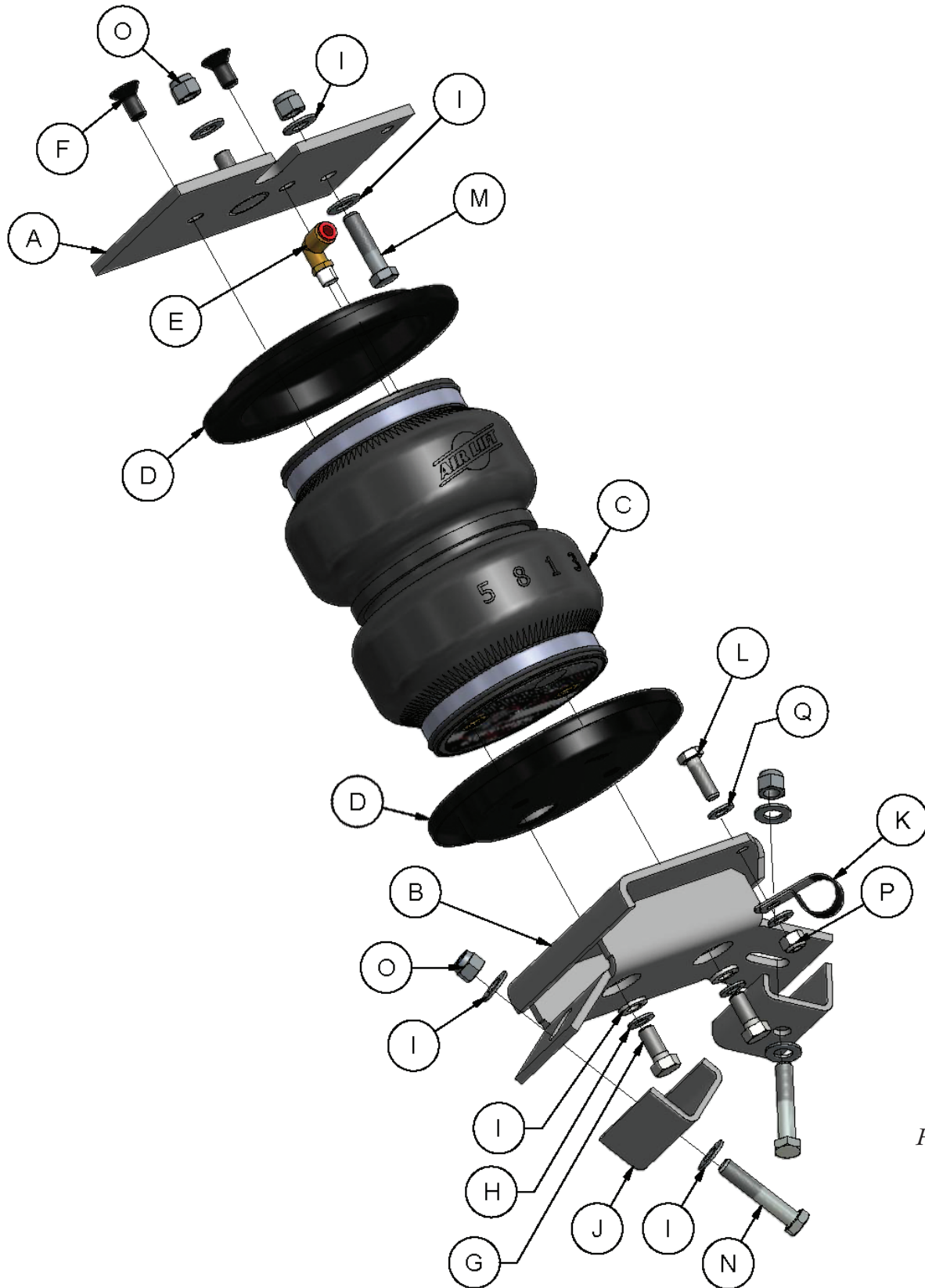


Fig. 1

# Hardware and Tools Lists

## Common Parts Included in both Kits

Item	Part #	Description.....	Qty
A1	07041	Left Hand Upper Bracket .....	1
A2	07042	Right Hand Upper Bracket.....	1
B	03441	Lower Bracket.....	2
E	21837	90 degree Swivel Fitting.....	2
F	17215	3/8"-24 X 3/4" Flat Head Screw.....	4
G	17203	3/8"-24 x 7/8" Hex Head Bolt.....	4
H	18427	3/8" Lock Washer.....	4
I	18444	3/8" Flat Washer .....	18
J	01663	J Clamp.....	4
K	10465	5/8" diameter Clip .....	1
L	17103	5/16"-18 X 1.0" Hex Cap Screw .....	1
M	17108	3/8"-16 X 1.5" Hex Cap Screw .....	2
N	17169	3/8"-16 X 2.0" Hex Cap Screw .....	4
O	18435	3/8"-16 Nylon Lock Nut.....	8
P	18438	5/16"-18 Nylon Lock Nut.....	1
Q	18501	M8 Flat Washer.....	4
AA*	20086	Air line Assembly.....	1
BB*	10466	Zip Tie .....	6
CC*	21230	Valve Cap.....	2
EE*	21234	Rubber Washer .....	2
FF*	18411	Star Washer .....	2
GG*	21233	5/16" Hex Nut .....	4

\* These parts are not shown in the Installation Diagram (Fig.1).

## Unique Parts in Each Kit

### LoadLifter 5000™ KIT 57272

Item	Part #	Description.....	Qty
C	58437	Air Spring .....	2
D	11951	Roll Plate.....	4

### LoadLifter 5000™ ULTIMATE KIT 88272

Item	Part #	Description.....	Qty
C	58496	Air Spring .....	2
D	11967	Roll plate.....	4

## TOOLS LIST

Description.....	Qty
Standard and metric open-end or box wrenches .....	Set
Ratchet .....	1
Standard and metric regular and deep-well sockets .....	Set
Torque wrench.....	1
7/32" Hex-key wrench (socket preferable).....	1
Hose cutter, razor blade, or sharp knife .....	1
Hoist or floor jack .....	1
Safety glasses .....	1
Safety stands.....	2
5/16" Drill bit (very sharp).....	1
Heavy duty drill.....	1
Air compressor or compressed air source .....	1
Spray bottle with dish soap/water solution.....	1

The photos in this manual show the LoadLifter 5000 Ultimate kit.



Missing or damaged parts? Call Air Lift customer service at (800) 248-0892 for a replacement part.

# Introduction

The purpose of this publication is to assist with the installation and maintenance of the LoadLifter 5000 series air spring kits. All LoadLifter 5000 series kits utilize sturdy, reinforced, commercial-grade single or double, depending on the kit, convolute bellows.

The air springs are manufactured like a tire with layers of rubber and cords that control growth. LoadLifter 5000 kits provide up to 5,000 pounds (2,268kg) of load-leveling support with air adjustability from 5-100 PSI (.34-7BAR).

It is important to read and understand the entire installation guide before beginning installation or performing any maintenance, service or repair.

## NOTATION EXPLANATION

Hazard notations appear in various locations in this publication. Information which is highlighted by one of these notations must be observed to help minimize risk of personal injury or possible improper installation which may render the vehicle unsafe. Notes are used to help emphasize areas of procedural importance and provide helpful suggestions. The following definitions explain the use of these notations as they appear throughout this guide.

**DANGER**

INDICATES IMMEDIATE HAZARDS WHICH WILL RESULT IN SEVERE PERSONAL INJURY OR DEATH.

**WARNING**

INDICATES HAZARDS OR UNSAFE PRACTICES WHICH COULD RESULT IN SEVERE PERSONAL INJURY OR DEATH.

**CAUTION**

INDICATES HAZARDS OR UNSAFE PRACTICES WHICH COULD RESULT IN DAMAGE TO THE MACHINE OR MINOR PERSONAL INJURY.

## IDENTIFYING THE DIFFERENCES BETWEEN KITS

Should you need to contact Air Lift customer service, you will need to know which kit you are inquiring about: standard LoadLifter 5000 or LoadLifter 5000 Ultimate. The kits are easily identifiable by looking at the roll plates and air lines.

- Standard **LoadLifter 5000** — Zinc-plated steel roll plates and black nylon air lines.
- LoadLifter 5000 Ultimate** — Black powder-coated roll plates and black nylon air lines.



LoadLifter 5000  
silver zinc-plated steel  
roll plate



LoadLifter 5000  
nylon air line



LoadLifter 5000 Ultimate  
black powder-coated roll plate



LoadLifter 5000 Ultimate  
nylon air line

# Installing the System

## PREPARING THE VEHICLE

1. Raise the vehicle and support the frame with safety stands, drop the axle down to make room for the air spring assemblies to be put into position between the frame and axle (Fig. 2).



Fig. 2

2. Unbolt the left and right side jounce bumpers (Figs. 3 and 4).



Fig. 3



Fig. 4

## ASSEMBLING THE AIR SPRING ASSEMBLIES

1. Set a roll plate (D) over the top of each air spring (C).

### NOTE

The radiused (rounded) edge of the roll plate (D) will be towards the air spring so that the air spring is seated inside both roll plates.

2. Install the swivel fitting (E) into the top of the air spring finger-tight plus one and a half turns (Fig. 5). Repeat for both air springs.

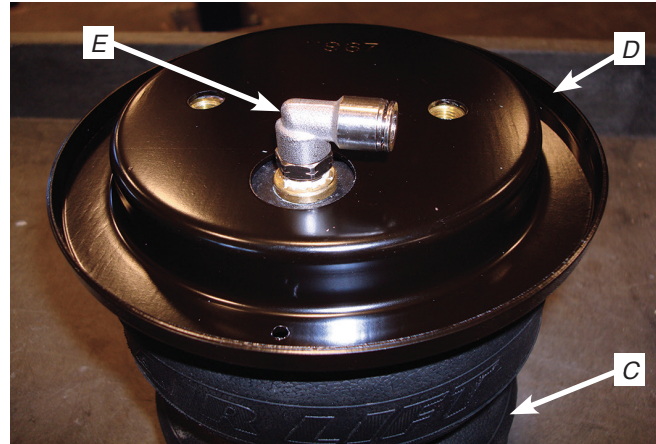


Fig. 5

3. Set both air springs in front of you with the fittings pointing opposite of each other.
4. Insert the 3/8" bolt (M) and flat washer (I) through the upper air spring bracket (A1 and A2) in the round hole as shown (Figs. 1 and 6). The brackets will have an "L" & "R" on them to specify left (driver's side) and right hand (passenger's side) assemblies.
5. Set both brackets onto the air springs and attach using the 3/8" flat head screws (F). Torque to no more than 20 lb.-ft. (Fig. 7).

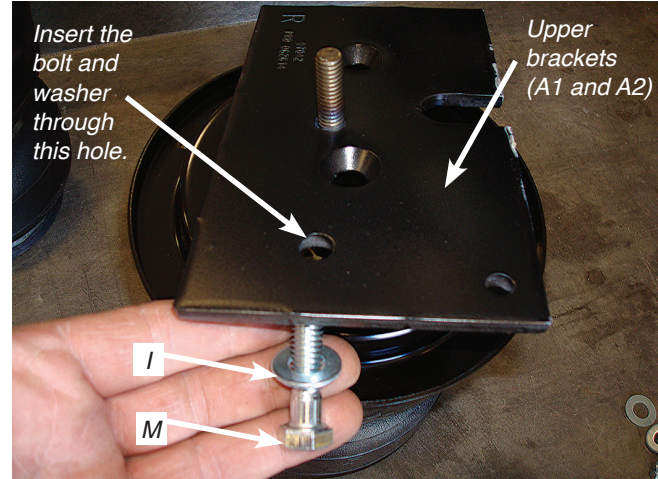


Fig. 6

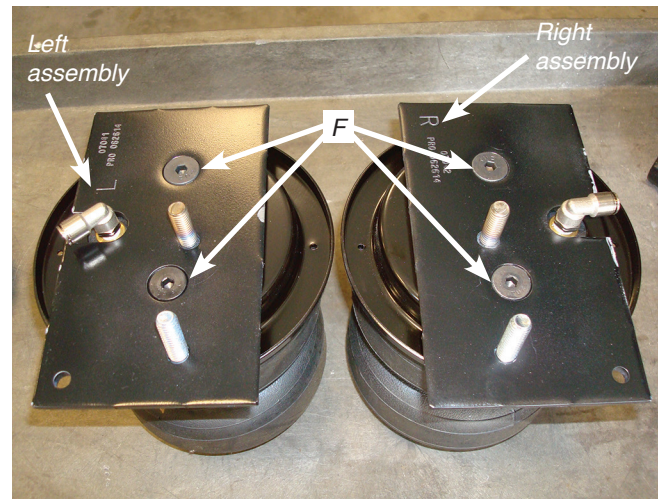


Fig. 7



- In the corner hole of one of the lower brackets (B), insert a 5/16" bolt (L) and flat washer (Q) from the top down (Fig. 8).

**NOTE**

*Because of the paint on the bracket, it may be necessary to drive the bolt into the hole with a wrench or socket.*

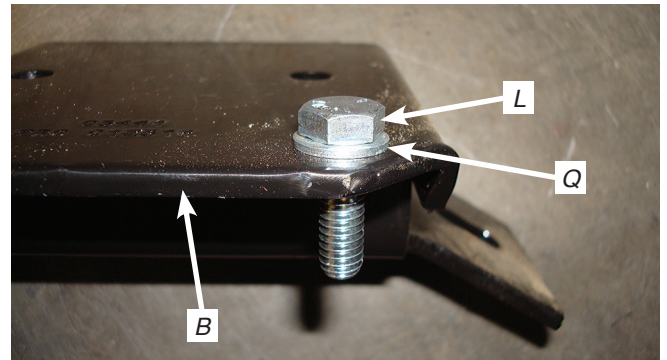


Fig. 8

- Attach this lower bracket (with the 5/16" bolt and washer) onto the left hand air spring assembly using a 3/8" bolt (G), lock washer (H) and flat washer (I) (Figs. 1 and 9) making sure that the 5/16" bolt is on the same side as the fitting (Fig. 10). Torque the mounting hardware to no more than 20 lb.-ft.

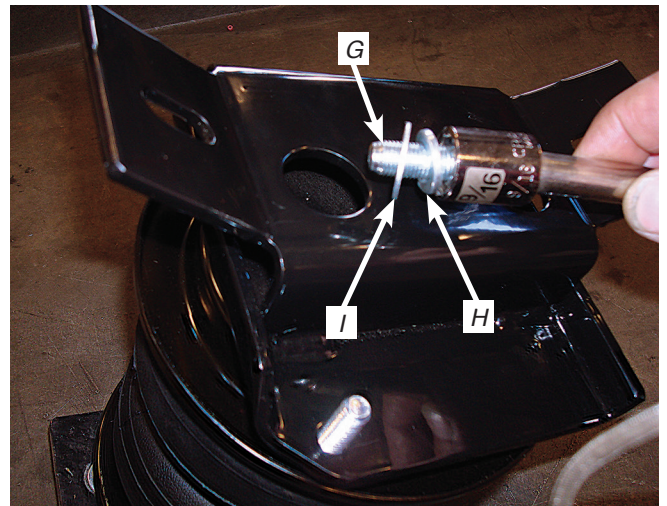


Fig. 9

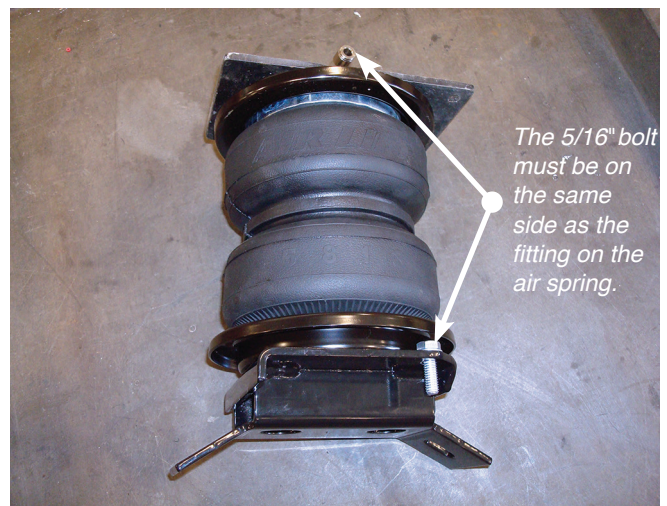


Fig. 10

- Attach the other lower bracket to the right hand side assembly in the same way as noted in the previous steps. Both assemblies shown in Figure 11.

## FINISHED ASSEMBLIES

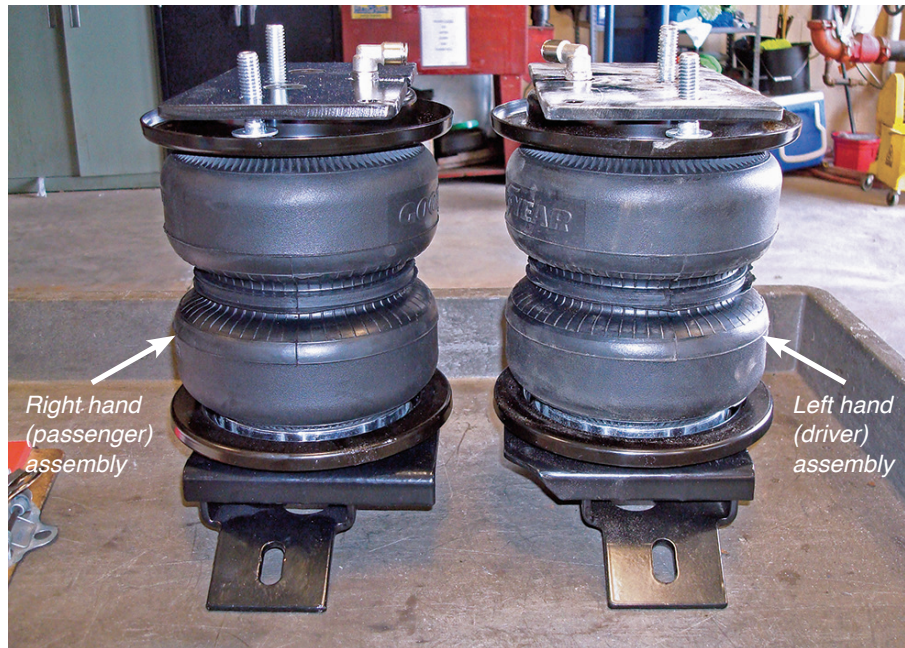


Fig. 11

## INSTALLING THE ASSEMBLIES

- Set the left hand assembly on the left side axle (driver's side) and the right hand assembly on the right side axle (passenger's side) with the fittings pointing inboard toward the center of the vehicle.
- Raise the axle up while aligning the bolt and stud (on the upper bracket) so that they insert into the two front holes in the frame (Fig. 12).
- Once the bolt and stud are in the frame, raise the axle all the way up and remove the safety stands.
- Cap the upper bracket stud and bolt with two 3/8" flat washers (I) and two nylon lock nuts (O). Repeat for the other side and torque the upper mounting hardware to 25 lb.-ft. (Fig. 13).

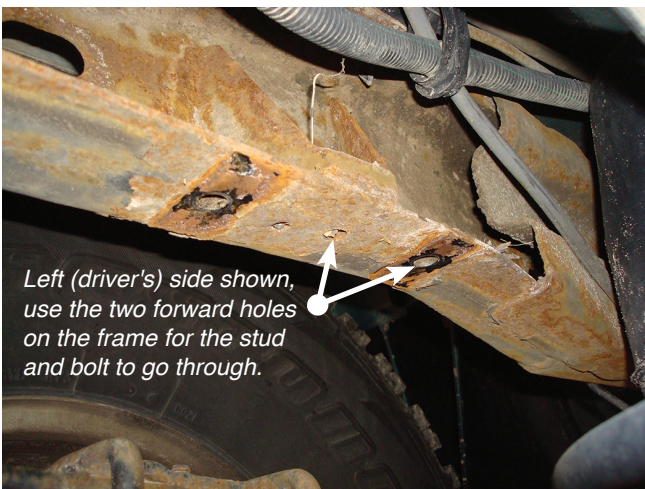


Fig. 12

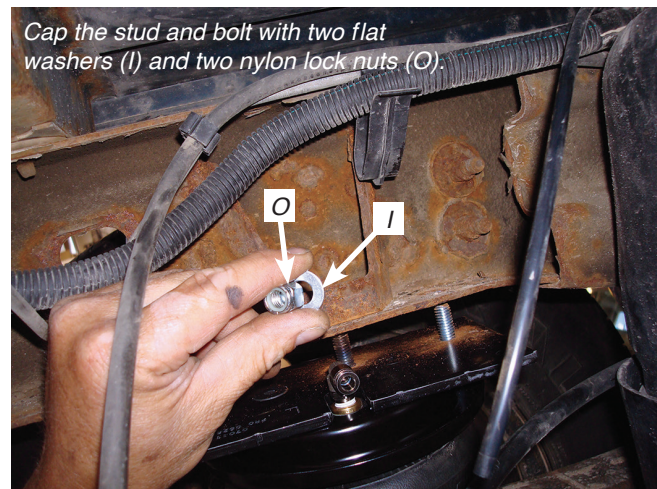


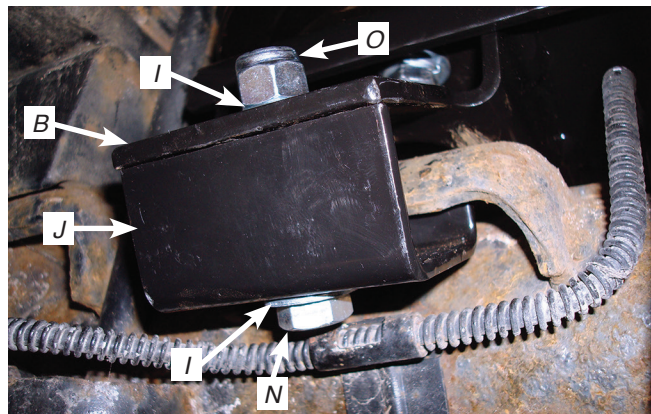
Fig. 13

## LOWER BRACKET ATTACHING INSTALLATION

1. Push the lower bracket forward or back to center it over the jounce bumper strike plate. Insert a hex head bolt (N) through a flat washer (I) and J-clamp (J) (Fig. 14). Install the J-clamp with the short end under the jounce bumper strike plate with the bolt through the lower bracket. Cap with a flat washer (I) and nylon lock nut (O). Do this on the front and rear of the lower bracket and evenly torque both sides to 10 lb.-ft. Repeat for the other side.

### NOTE

*It may be necessary on some models to adjust the hard brake line bracket on the left rear (driver's side) in order to insert and tighten the lower bracket mounting hardware (Fig. 15).*



*Torque the hardware evenly to 10 lb.-ft. keeping the lower bracket centered over the jounce bumper strike plate on the axle.*

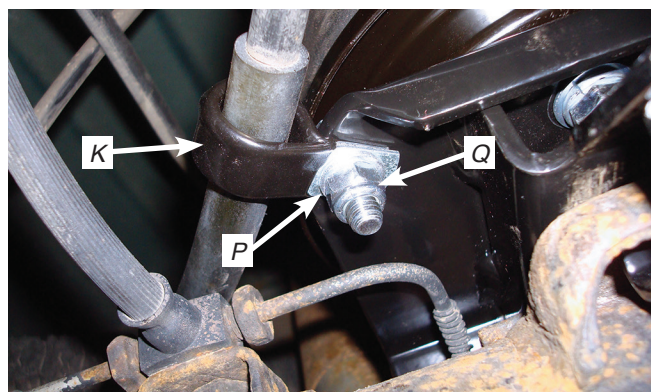
*Fig. 14*



*It may be necessary to adjust the brake line bracket slightly to gain clearance to insert and tighten the rear left (driver's side) hardware as shown.*

*Fig. 15*

2. Finish the lower bracket installation by installing the 5/8" diameter clip (K) over the emergency brake line (Fig. 16) and attach it to the lower bracket using the 5/16" bolt installed previously and one flat washer (Q) and nylon lock nut (P). Torque to 15 lb.-ft.



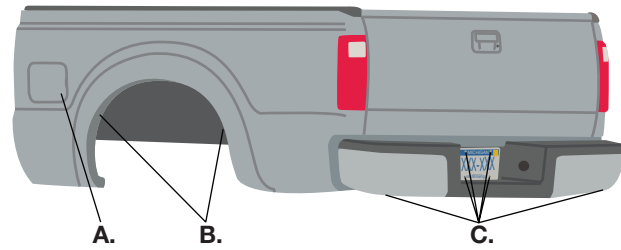
*Fig. 16*

# Installing the Air Lines

Air lines are routed from the air springs to Schrader valves. Begin by choosing locations for the Schrader valves and drill a 5/16" (8mm) hole, if necessary (Fig. 17).

**CAUTION**

KEEP AT LEAST 6" (150MM) OF CLEARANCE BETWEEN ALL AIR LINES AND THE EXHAUST SYSTEM. AVOID SHARP BENDS AND EDGES.



A. Inside fuel tank filler door    B. Inside rear wheel wells    C. License plate or rear bumper area

Fig. 17

## INSTALLING NYLON AIR LINES

- For nylon air line (\*), it is recommended that the air line be routed along the top of the frame, forward of the axle, then down to the fitting. After cutting the air line to length, install the air line thermal sleeve over the air line on the passenger's (right) side before inserting into the fitting. Secure the air lines to the upper coil spring mount with zip ties (BB) supplied.
- Cut the air line in half. Make clean, square cuts with a razor blade or hose cutter (Fig. 18). Do not use scissors or wire cutters.
- Use zip ties to secure the air line to fixed points along the chassis. Do not pinch or kink the air line. The minimum bend radius for the air line is 1" (25mm). Leave at least 2" (50mm) of slack in the air line to allow for any movement that might pull on the air line.
- Install the Schrader valve in the chosen location (Fig. 19).

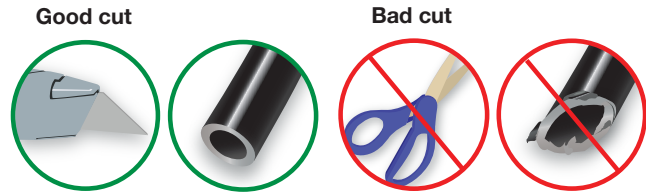


Fig. 18

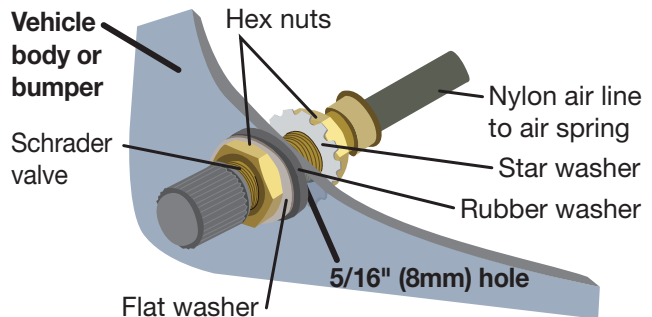


Fig. 19

## INSTALLING THE HEAT SHIELD

1. Attach the metal heat shield to the exhaust where it is closest to the air spring. Slide the air line thermal sleeve over the air line and place it where the air line is closest to the exhaust (Fig. 20).

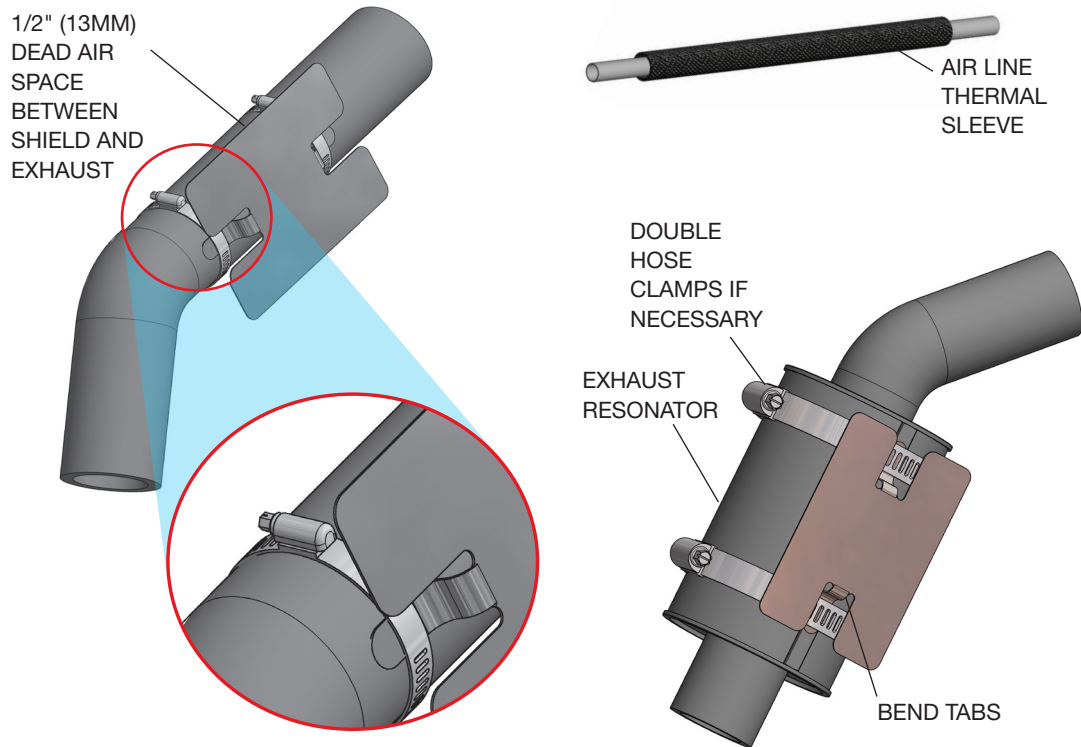


Fig. 20

*Tie off hose with zip tie using the forward, inside small hole in the upper bracket.*



Fig. 21

# Finished Installation

The images show the finished installation of both sides.



*Right side (passenger) forward of axle view*



*Right side (passenger) rear of axle view*



*Left side (driver) front of axle view*



*Left side (driver) rear of axle view*

## INSTALLATION CHECKLIST

- Clearance test** — Inflate the air springs to 40-60 PSI (2.8-4.1BAR) and make sure there is at least 1/2" (13mm) clearance from anything that might rub against each air spring. Be sure to check the tire, brakes, frame, shock absorbers and brake cables.
- Leak test before road test** — Inflate the air springs to 40-60 PSI (2.8-4.1BAR) and check all connections for leaks. All leaks must be eliminated before the vehicle is road tested.
- Heat test** — Be sure there is sufficient clearance from heat sources, at least 6" (152mm) for air springs and air lines. If a heat shield was included in the kit, install it. If there is no heat shield, but one is required, call Air Lift customer service at (800) 248-0892.
- Fastener test** — After 500 miles (800km), recheck all bolts for proper torque.
- Road test** — The vehicle should be road tested after the preceding tests. Inflate the air springs to recommended driving pressures. Drive the vehicle 10 miles (16km) and recheck for clearance, loose fasteners and air leaks.
- Operating instructions** — If professionally installed, the installer should review the operating instructions with the owner. Be sure to provide the owner with all of the paperwork that came with the kit.

## MAINTENANCE AND USE GUIDELINES

1. Check air pressure weekly.
2. Always maintain normal ride height. Never inflate beyond 100 PSI (7BAR).
3. If the system develops an air leak, use a soapy water solution to check all air line connections and the inflation valve core before deflating and removing the air spring.
4. Upon successful completion of the installation, follow these pressure requirements for the air springs.



### CAUTION

FOR SAFETY AND TO PREVENT POSSIBLE DAMAGE TO THE VEHICLE, DO NOT EXCEED MAXIMUM GROSS VEHICLE WEIGHT RATING (GVWR) OR PAYLOAD RATING, AS INDICATED BY THE VEHICLE MANUFACTURER.

ALTHOUGH THE AIR SPRINGS ARE RATED AT A MAXIMUM INFLATION PRESSURE OF 100 PSI (7BAR), THE AIR PRESSURE ACTUALLY NEEDED IS DEPENDENT ON LOAD AND GROSS VEHICLE WEIGHT RATING.

## LIMITED WARRANTY AND RETURN POLICY

Air Lift Company provides a limited lifetime warranty to the original purchaser of its load support products, that the products will be free from defects in workmanship and materials when used on cars and trucks as specified by Air Lift Company and under normal operating conditions, subject to the requirements and exclusions set forth in the full Limited Warranty and Return Policy that is available at [www.airliftcompany.com/warranty](http://www.airliftcompany.com/warranty).

For additional warranty information contact Air Lift Company customer service.



*Thank you for purchasing Air Lift Products — the Authorized Installer's choice!*

## Need Help?

Contact Air Lift Company Customer Service at (800) 248-0892  
or email [service@airliftcompany.com](mailto:service@airliftcompany.com).

For calls outside the U.S. or Canada, dial (517) 322-2144.



Air Lift Company • 2727 Snow Road • Lansing, MI 48917 or P.O. Box 80167 • Lansing, MI 48908-0167

Air Lift Company reserves the right to make changes and improvements to its products and publications at any time.  
For the latest version of this manual, contact Air Lift Company at (800) 248-0892 or visit [airliftcompany.com](http://airliftcompany.com).